



Color Management Software

# ColorNavigator 7



Dedicated Color Management Software for ColorEdge

# ColorNavigator 7

Quick and Easy

## Introduction

This booklet briefly introduces EIZO's unique color management software for ColorEdge monitors.



ColorEdge and ColorNavigator7 ensure creatives with varying needs achieve the most accurate color display.

Digital Photography



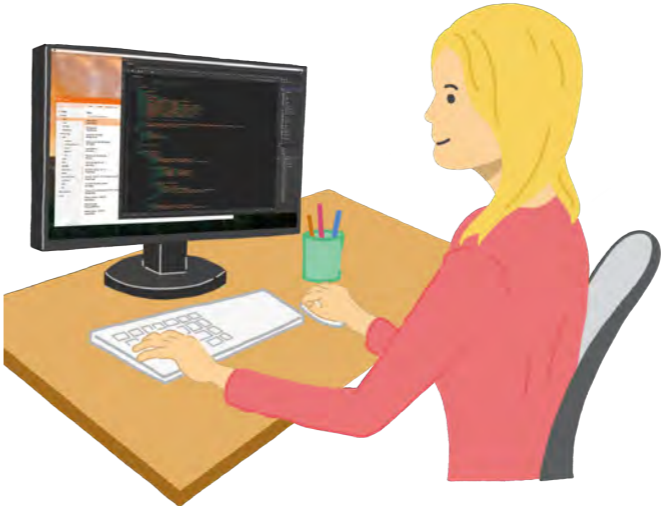
Printing



Video Creation



Web Content Creation



3DCG

## What is ColorNavigator 7?

### Free Software for ColorEdge Series Color Management Monitors

ColorNavigator 7 is the latest calibration and quality control software for ColorEdge color management monitors. It combines all the features of EIZO's previous color management software, ColorNavigator 6 and ColorNavigator NX, to create a new and improved solution for creatives in a range of fields. The proprietary software makes calibration simple and produces predictable results for photography, design, print, and video creation.



ColorNavigator 7



Consistent Image Sharing



## Correctly Calibrate to Your Preferred Target

# ColorNavigator 7 Features



## Increased Productivity by Saving Time and Labor when Calibrating

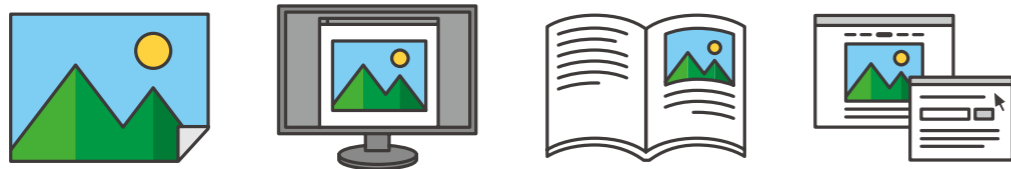
ColorNavigator 7 can calibrate every color mode simultaneously so you do not have to spend time managing each one individually. This saves time and ensures your screen remains accurate no matter which color mode you work in.

*For older ColorEdge models, including CS230, and for those who have upgraded from ColorNavigator 6, each target must be calibrated individually.*



## Choose from Multiple Color Modes that Suit Your Creative Field

Photography, design, print, web creation, and more – ColorNavigator 7 includes multiple color modes such as sRGB, Adobe® RGB, and standards for film creation, so you can choose the one that matches your field's target values.



## Quickly Change Color Modes Simply by Pressing the Monitor's Front Buttons

ColorNavigator 7's color mode list is populated according to the monitor's OSD menu so you can rest assured that all possible options are covered. After calibration, you can quickly and easily change modes using the monitor's front buttons even when the software is not running.

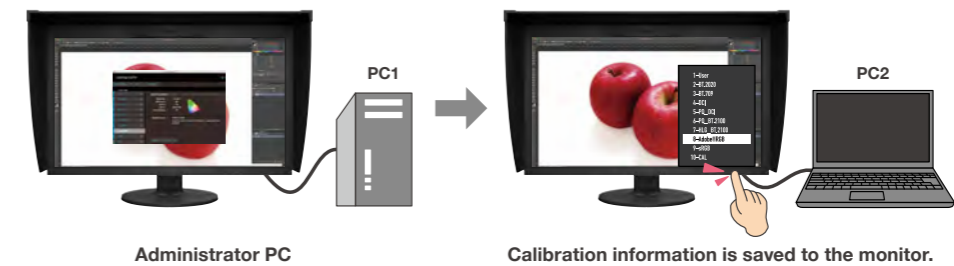
*When ColorNavigator 7 is running in the background, changing the color mode via the monitor's OSD automatically adjusts the profile on the computer's OS to match.*



# Additional Features

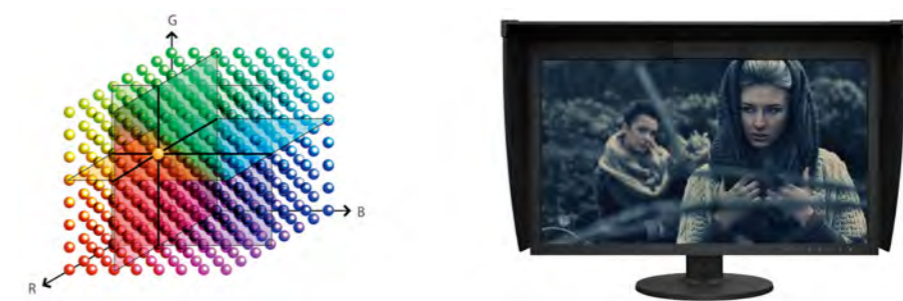
## Calibrate Multiple ColorEdge Monitors with an Administrator PC

With ColorNavigator 7, calibration information carried out by the administrator's PC is saved to each ColorEdge monitor instead of the operating system. This means that individual users do not need to recalibrate the monitor, even when using a different PC from the administrator.



## Film Emulation with 3D LUT

ColorNavigator 7 can create emulation data from the 3D LUT of the video content used in the color grading system for matching the look of the film on a CG series monitor.



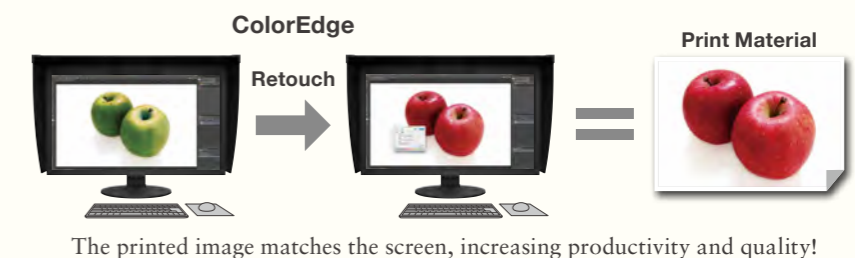
*Supported by CG3145, CG319X, CG248-4K, CG279X, CG277, and CG247X only.*

## Why is Calibration Important?

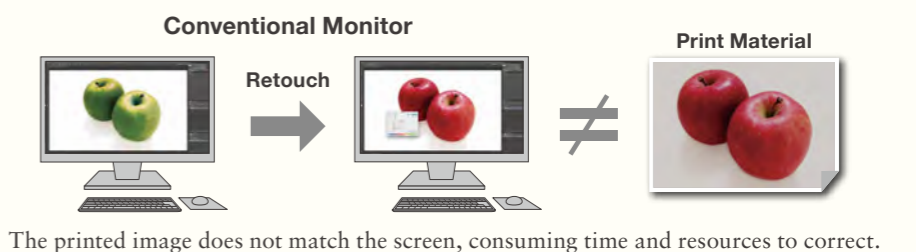
For example, if you are creating print material...



ColorEdge monitor with correct display after calibrating with ColorNavigator 7.



Uncalibrated monitor with incorrect display.



# Easy 3 STEP Calibration

You can calibrate your monitor easily in just 3 steps.

**STEP 1 Color Mode**

- User
- BT.2020
- BT.709
- DCI
- PQ\_DCI
- PQ\_BT.2100
- HLG\_BT.2100
- Adobe RGB
- sRGB
- CAL

**STEP 2 Adjustment Target**

Adobe RGB\_00000002

Brightness: 120 cd/m<sup>2</sup>  
White point: D65  
Gamma: 2.20  
Gamut: Adobe RGB  
Gamut Clipping: Off

Adjustment date: 2018-11-02 10:00  
When the monitor is used for 198 hour(s), adjustment will be executed.

**STEP 3**

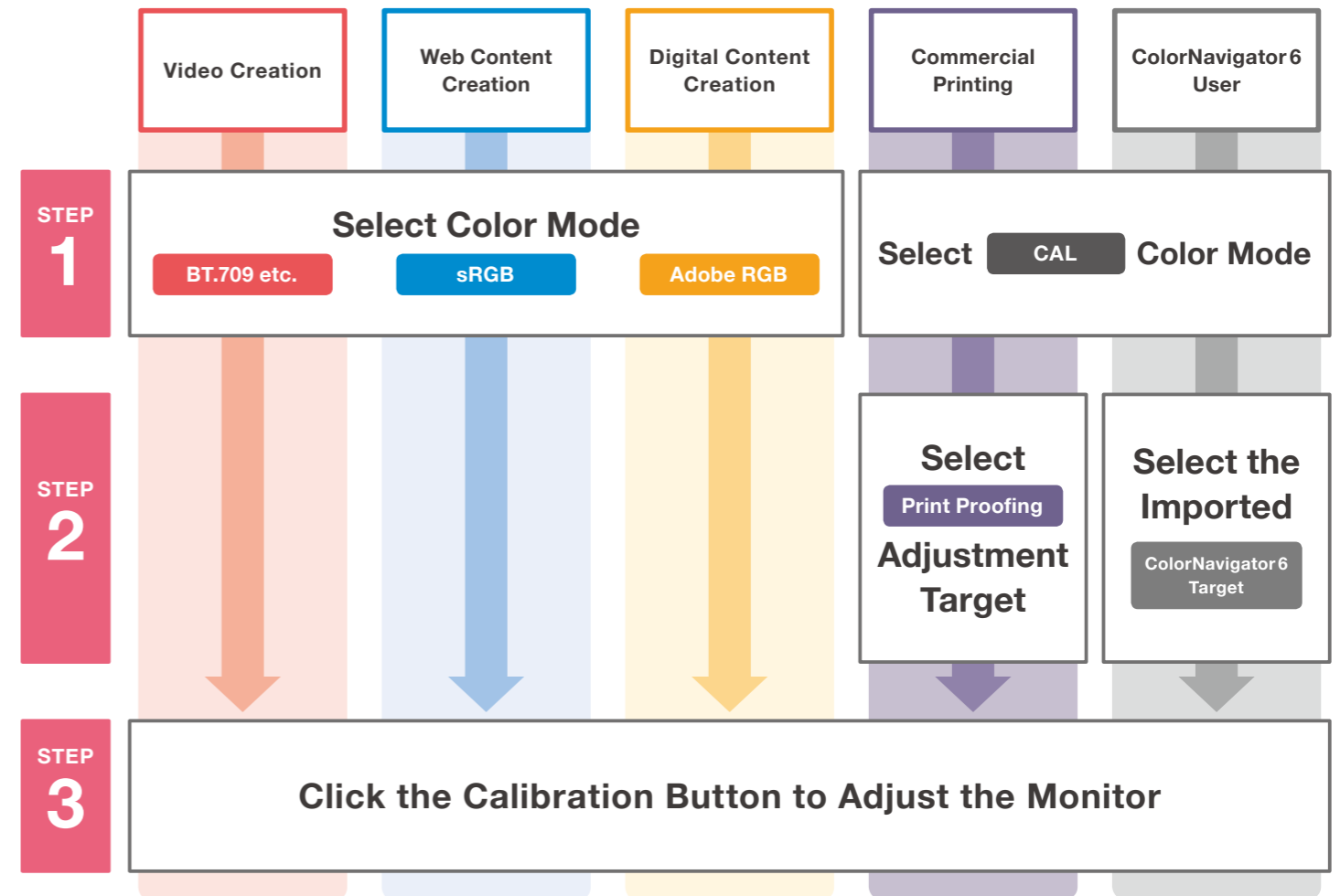
Calibrate Details...

**Print Proofing**  
Brightness: 120 cd/m<sup>2</sup>  
Color Temperature: 5000K  
Gamma: 2.2  
With Gray Balance  
Gamut: Native

**sRGB**  
Brightness: 120 cd/m<sup>2</sup>  
Color Temperature: 6500K  
Gamma: 2.2  
Gamut: sRGB

**Adobe® RGB**  
Brightness: 120 cd/m<sup>2</sup>  
Color Temperature: 6500K  
Gamma: 2.2  
Gamut: Adobe® RGB

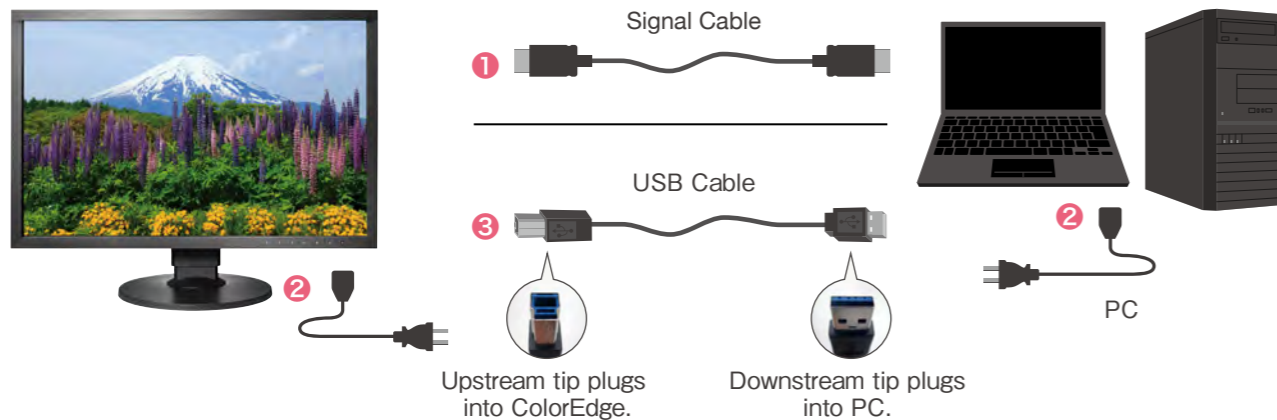
Select the Target Appropriate for Your Use



## Before You Begin

Check that your ColorEdge monitor is correctly connected to your PC.

1. Connect the monitor to the PC using the signal cable.
2. Connect the monitor and PC to the power and turn them on.
3. Connect the monitor to the PC using the USB cable.



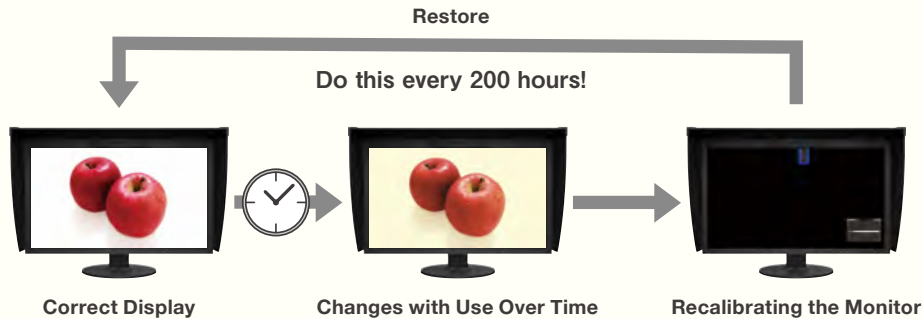
After completing the above steps, your monitor will display colors accurately. Close ColorNavigator 7 and you can start creating!

## When Upgrading from ColorNavigator 6

The steps for users who have upgraded from ColorNavigator 6 to ColorNavigator 7, or who are using older ColorEdge models, including CS230, will differ from this guide. For details, please visit: [www.eizo.com/i/cn7-guide](http://www.eizo.com/i/cn7-guide)

## Why is Regular Calibration Needed?

With continued use, monitors lose the ability to display colors correctly, causing them to become darker (decreased brightness) or change in hue (white point deviation). To restore the monitor to its original state, it is necessary to readjust the monitor through regular calibration.



**With ColorNavigator 7 and ColorEdge, you can easily recalibrate the monitor for reliable results!**

## Recommended with ColorNavigator 7

ColorNavigator 7 supports the below calibration sensors and system environment (as of November, 2018).

Supported Major Calibration Sensors		Supported System Environment	
X-Rite	i1Monitor, i1Pro, i1Pro 2, i1Studio, i1Display 3, i1Display Pro	Mac	Windows
	ColorMunki PHOTO ColorMunki DESIGN	OS	OS
Datacolor	Spyder4 Spyder5		
EIZO	EX2 EX3	PC which fulfills OS requirements.	
	Built-In Calibration Sensor	Conditions	<ul style="list-style-type: none"> <li>• USB port (PC with 2 or more open ports is required)</li> <li>• 16.7 million colors</li> <li>• Resolution of 1024 × 768 or greater</li> </ul>

ColorNavigator 7 is available as a free download. See EIZO's website for a full list of supported sensors and compatibility information. [www.eizoglobal.com/products/coloredge/cn7/](http://www.eizoglobal.com/products/coloredge/cn7/)

### EIZO Corporation

153 Shimokashiwano, Hakusan, Ishikawa 924-8566 Japan  
Phone +81-76-277-6794 Fax +81-76-277-6793

[www.eizoglobal.com](http://www.eizoglobal.com)

All product names are trademarks or registered trademarks of their respective companies. ColorEdge and EIZO are registered trademarks of EIZO Corporation. Specifications are subject to change without notice.

Copyright© 2018 EIZO Corporation. All rights reserved. (181010)