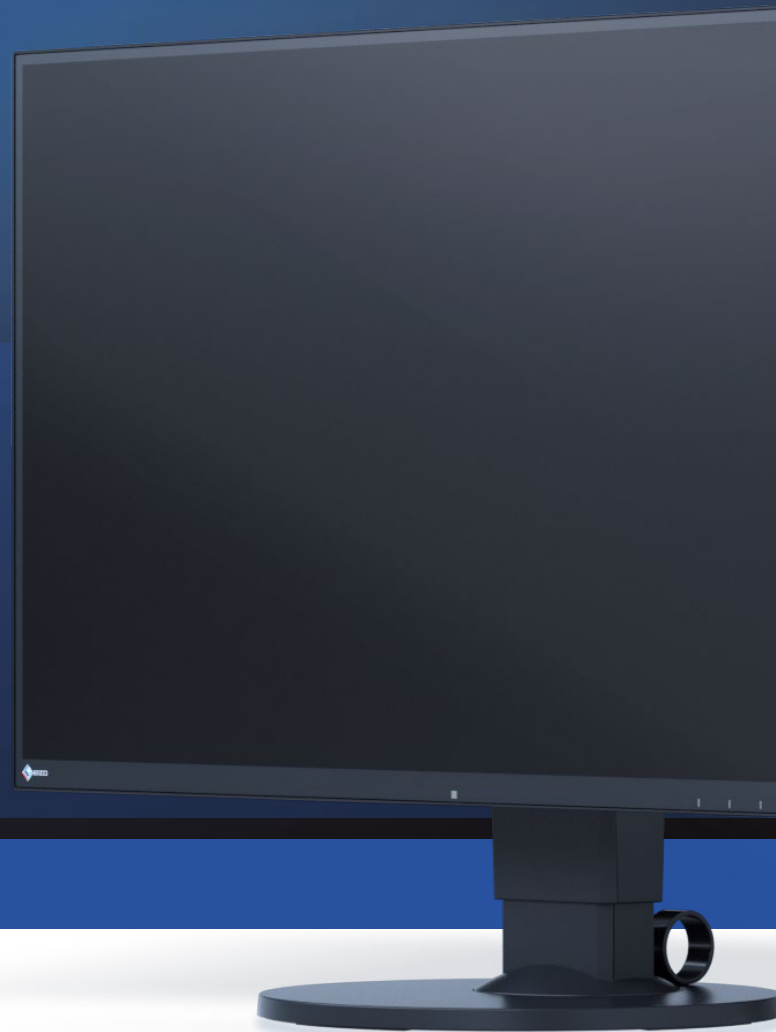




Welcome to your
new office.



Set your EIZO
FlexScan monitor
up perfectly in just four easy steps.



Thank you for choosing an EIZO monitor!

With this decision, you have become the proud owner of a long-lasting, high-quality product that will significantly improve your daily work routine. The functions for improved ergonomics in particular will make your life easier in many ways. This guide will help you to adjust your monitor perfectly to your individual needs and preferences. We recommend doing this before using your new monitor; it will only take a few minutes of your time.

1 Auto EcoView: The ideal brightness to reduce eye fatigue

Your ELZO monitor allows both automatic and manual selection of the precise screen brightness to fit your needs. In the following section, we will explain the different settings to achieve the ideal brightness.

A Selecting the brightness manually

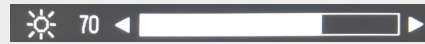
▶ Touch any button

You always have the option to manually select the precise screen brightness that you want.

▶ Open the Brightness menu



▶ Brightness menu



▶ Set your individuell brightness

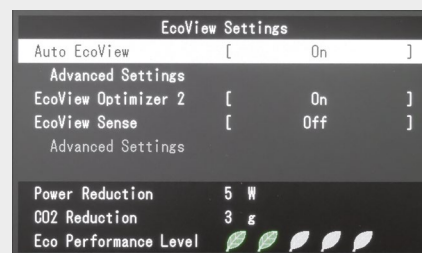


B Turning Auto EcoView on/off

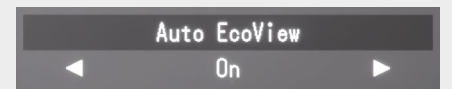
▶ Touch any button

The built-in Auto EcoView function continuously measures the ambient brightness and automatically adjusts the screen brightness when necessary.

▶ Open the Eco menu



▶ Auto EcoView aktivieren bzw. deaktivieren



C Individual settings for Auto EcoView

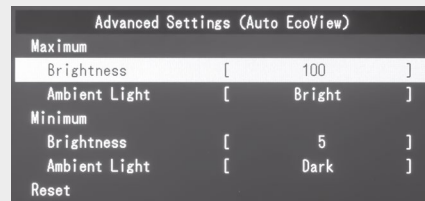
▶ Touch any button

If the factory settings for maximum (in bright environments) and minimum (in dark environments) brightness don't fit your personal preferences perfectly, you can adjust them to your liking.

▶ Open the Eco menu



▶ Select Advanced Settings



D Auto EcoView with adjusted brightness

▶ Touch any button

Auto EcoView automatically adjusts the screen brightness according to the ambient light, ranging from the darkest to the brightest environment. You can still manually select your preferred screen brightness for the current ambient brightness. In the future, Auto EcoView will then take this selected brightness into consideration when automatically adjusting.

▶ Open the Brightness menu



▶ Brightness menu



▶ Set your individuell brightness



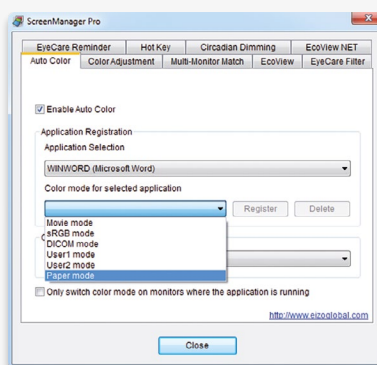
2 Paper mode: Read just like on real paper

Your new EIZO monitor features a Paper Mode that optimises the settings for contrast, brightness and colour. This simulates the reading experience of real paper – in a way similar to modern e-book readers. In addition, the Paper Mode reduces the amount of blue light. It is widely assumed that blue light can cause problems falling asleep in the evening by interfering with the release of melatonin.

You can easily activate the Paper Mode at any time:

- ▶ Press any button; this opens the „Button Guide“.
- ▶ Touch the “Mode” button; this opens a list of the different modes that are available.
- ▶ Use the arrow buttons to select “Paper Mode” and confirm with “OK” –done!

If the EIZO ScreenManager Pro is installed on your computer, you can use it to determine if the paper mode will be activated automatically and for which programs (Word, Excel, etc.).



The EIZO software ScreenManager Pro additionally offers the function „Circadian Dimming“. This controls the gradient of the monitor’s colour temperature over the course of a day. Approaching the evening, the colour temperature will be reduced and the monitor will give off less blue light.

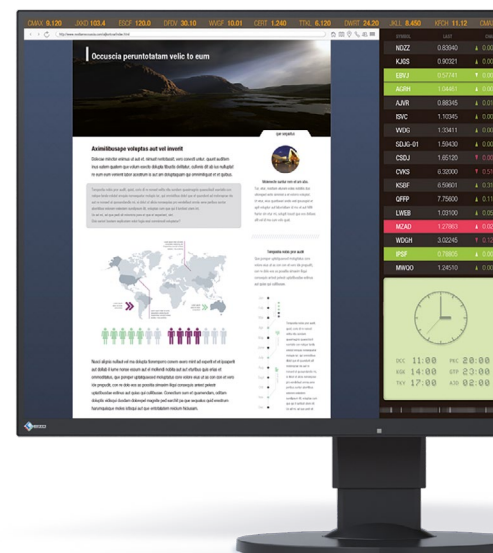
You can read here how this works: http://www.eizoglobal.com/products/flexscan/blue_light_reduction/index.html

3 Work flicker-free: EIZO Hybrid Solution

Conventional LED backlight monitors flicker below 200 Hz, which can quickly tire the eyes depending on the sensitivity of the user.

To solve this problem, EIZO has equipped your monitor with two different technologies to control brightness. The hybrid solution uses the ideal method depending on the brightness of the picture. It combines the advantages of pulse width modulation (with very high frequencies) and current strength. This reduces flickering by up to 74 per cent compared to conventional monitors.

The EIZO hybrid solution is always active, so you don’t have to manually turn it on. Enjoy the relaxed and eye-friendly way to work with your computer right away!



4 The perfect fit for you: EIZO FlexStand

Every human has different physical traits such as height, arm length, head size and more. To ensure a perfect, back-friendly work posture for everyone, EIZO equipped your new monitor with a FlexStand. This allows for precise adjustment of the display to fit your needs exactly.

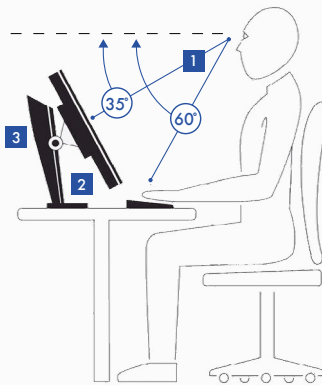
The right posture for working relaxed and back-friendly over long periods of time is explained in the image below.

The most important points:

- Your monitor has the perfect height if you are looking at the centre of the screen in a down ward angle of 35°.
- Tilt the monitor back so that you are looking at the centre of the screen at a right angle.
Make sure that the screen doesn't have any reflections, for example from lighting fixtures on the ceiling.
- While doing this, you should also re-examine your general posture when sitting: Are the backrest and the height of your chair set up right?
Can you rest the heel of your hand on the desk.

Maximum height of the topmost line on screen

- 1 Viewing angle of the user slightly downwards
- 2 Monitor can be lowered down to the stand
- 3 Monitor can be tilted backwards up to 35°



EIZO Europe GmbH
Germany

Helmut-Grashoff -Straße 18
41179 Mönchengladbach
Phone: +49 2161-8210-0
■ www.eizo.de

EIZO Austria GmbH
Austria, Hungary, Romania & Bulgaria

Pfarrgasse 87
1230 Wien
Phone: +43 1 6152886-10
■ www.eizo.at ■ www.eizo.hu

EIZO Europe GmbH
Belgium & Luxembourg

Antwerpsesteenweg 22
2860 Sint-Katelijne-Waver (Mechelen)
Phone: +32 15 645511
■ www.eizo.be

EIZO Europe GmbH
Czech Republic & Slovakia

Meteor Centre Office Park "B"
Sokolovská 100/94
1 86 00 Praha 8
Phone: +420 222 319 714
■ www.eizo.cz ■ www.eizomonitor.sk

EIZO Europe GmbH
Italy

Via A. Manzoni n. 44
20095 Cusano Milanino (MI)
Phone: +39 02 66429521
■ www.eizo.it

